

# Airless Accessories

Get the most out of your equipment



- Choose the right accessory to optimise comfort and performance
- Work faster, easier and cleaner
- Use your sprayer to its full capacity

# AIRLESS GUNS

## DIFFERENT TYPES OF GUNS

The primary purpose of an **Airless Gun** is to act as an on/off valve. Many spray guns have added features such as built-in filters or swivels for increased performance. When selecting a gun, there are **several factors** to consider, such as the size of the fluid passage and diffuser, pressure rating, as well as the comfort and feel of the gun.

Graco offers **different types of Guns** to meet your needs, all with unique features for top spraying quality and comfort.



### FTx™ Gun

For fine finish and general painting applications where manoeuvrability is required. Lightest Gun.



### Contractor™ Gun

The ideal paint spraying gun to spray large surfaces and where a sturdy yet comfortable grip is needed.



### Silver Plus™ Gun

Machined out of one piece, this gun is particularly suited to spray thicker materials. The lightweight and durable design make this gun preferred as more comfortable through time.



### TexSpray™ Blue Gun

Unique Airless Gun design with large fluid passages and a Heavy Duty spring. Ideal for high solids, smooth plasters, intumescent paints, mastics and protective coatings. Use with the Atomizer Kit to obtain texture finishes.



### Contractor™ Inline Gun

Provides a straight connection to extensions for the most optimal working position. Its ability to rotate 180° enables a top spraying position.



### Silver Flex™ Gun

Same body as a Silver Plus™ with the difference that this gun does not have a fluid tube going from handle to nozzle. The benefit is that a hose (of large diameter) can be connected directly to the gun nozzle through the spring guard mounted on the handle base. For airless paint and line striping applications.



### TexSpray™ Inline Gun

Airless Gun optimized for high flow of thicker materials with 1/2" fluid passages. Less restrictions with only 30° bend at the head of the Gun. "Form-fit" polymer handle for comfort grip.

# CONTRACTOR & FTX GUNS

## ADVANCED "LONG LASTING" FEATURES



### MINIMAL GUN SPITTING

Special seat design minimizes space between the needle and the tip, thus greatly reducing paint spitting when triggering the gun.



### "EASY TO REACH" TRIGGER LOCK

Simple, thumb engaged safety lock



### EASYGLIDE™ GUN SWIVEL

Increased manoeuvrability



### QUICK & CONSISTENT NEEDLE SHUT OFF

The FlexSeal™ needle design encloses the needle in a flexible cover, avoiding exposure to the paint.

With gun trigger open, the FlexSeal™ inflates like a balloon. Pressure inside the gun pushes against this now inflated seal. This causes the needle to shut off easier and faster.



### SEALED-OFF SPRING

The spring is separated from the needle and has no contact with the paint.

=> eliminates paint drying or debris catching on the spring

=> modular design enables easy replacement on the field



### ERGONOMIC GUN HANDLE

Reduces operator fatigue, offers maximum control and comfort while spraying

### DETACHABLE TRIGGER GUARD

Easy access to gun filter



Check out animation on  
[www.ContractorFtx.eu](http://www.ContractorFtx.eu)



## GUN QUICK REFERENCE CHART

Contractor™

FTx™

Contractor  
Inline

Silver  
Plus™

Silver  
Flex™

TexSpray  
Blue

TexSpray  
Inline

### FEATURES

Max Working Pressure	248 bar	248 bar	248 bar	345 bar	345 bar	275 bar	280 bar
Fluid Orifice Diameter	3.2 mm	3.2 mm	3.2 mm	2.3 mm	2.3 mm	3.2 mm	6.35 mm

### CAN BE USED WITH

RAC X™ Guard & Tip	■	■		■	■	■	■
RAC 5™ Guard & Tip	■	■		■	■	■	■
EasyOut™ Gun Filter	■	■	■				

### CONFIGURATIONS

GUN	Contractor™	FTx™	Contractor Inline	Silver Plus™	Silver Flex™	TexSpray Blue	TexSpray Inline
2-Finger Trigger, RAC X Tip* & Guard	288475	288438	244364	246240	246468		
4-Finger Trigger, RAC X Tip* & Guard	288425	288429					
2-Finger Trigger, RAC 5 Tip* & Guard				243283			
2-Finger Trigger, RAC 5 Guard	288477	288428					
2-Finger Trigger, Flat Tip Guard				235460			
4-Finger Trigger, Flat Tip Guard				235461			
2-Finger Trigger, FF Flat Tip Guard				235462			
4-Finger Trigger, HD Guard & Tip						241705	
2-Finger Trigger, RAC 5 Guard & LineLazer Tip*					248157		
4-Finger Trigger, no Tip, no Guard (TMX Tip & RAC 5 Guard recommended)							245820

## GUN/TIP/HOSE KITS

### OPTIMIZE EFFICIENCY

Whether you simply need to replace your worn-out spray kits, or whether you want one spray line for solvent-based material and another for waterborne: complete Gun/Tip/Hose Kits exist for each of the above mentioned gun types.

Optimize your comfort and efficiency by having the right Gun/Tip/Hose Kit for each application.






# GUARDS & TIPS

## CHOOSING THE RIGHT TIP FOR YOUR JOB IS ESSENTIAL!

It optimises your performance, improves the quality of your work and controls your costs.

Graco's superior RAC X™ SwitchTips™ are high-performance, long lasting tips designed to maintain a wide spray pattern for a long period of time. Available in a large selection of sizes RAC X tips spray lacquers to latex and texture materials. The corresponding guards are designed for optimal working safety.

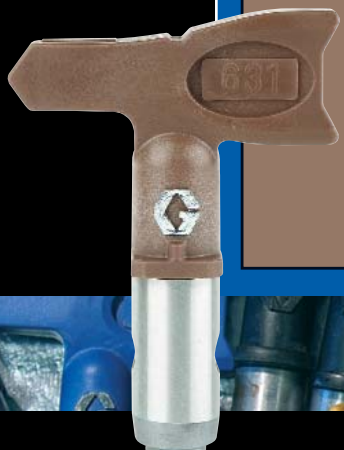
The latest range of RAC X tips now also facilitate the process of choosing the right tip for each application. They simply come with a different colour code for the application they serve.

-  The **GREEN FFA** tip for all Fine Finish Applications.
-  The **BLUE PAA** tip for all Professional Airless Applications.
-  The **BROWN HDA** tip for all Heavy Duty and Texture Applications.

In addition to the colour coding, RAC X HDA tips contain an important number of **BIG TIP SIZES** especially developed for high performance needs. The patented long life design of the RAC X tip and fan width helps the painter save time, while resulting in superb atomization and finish quality. A special locking tab ensures that the tip stays securely in the guard. The 60 cm fan of the WideRac™ tip will cover double the surface in half the time: perfect for high production applications.

Range	Orifice	FAN WIDTH								WA-xxxx 60 cm	Pump Filter	Gun Filter
		5 cm	10 cm	15 cm	20 cm	25 cm	30 cm	35 cm	40 cm		SUGGESTED	CORRESPONDANCE*
FFA-xxx	0.008"	108	208	308							200 mesh	100 mesh (287032)
	0.010"	110	210	310	410	510					100 mesh	
	0.012"	112	212	312	412	512	612					
	0.014"		214	314	414	514	614					
PAA-xxx	0.015"	115	215	315	415	515	615					
	0.017"		217	317	417	517	617				60 mesh	60 mesh (287033)
	0.019"		219	319	419	519	619				30 mesh	none
	0.021"		221	321	421	521	621	721	821	1221		
	0.023"			323	423	523	623	723		1223		
	0.025"		225	325	425	525	625			1225		
HDA-xxx	0.027"		227	327	427	527	627		827	1227	30 mesh	none
	0.029"			329	429	529	629	729		1229		
	0.031"		231	331	431	531	631		831	1231		
	0.033"				433	533	633		833	1233		
	0.035"		235	335	435	535	635	735	835	1235		
	0.037"					537	637			1237		
	0.039"				439	539	639			1239		
	0.041"				441	541	641					
	0.043"				443	543	643					
	0.045"				445	545	645					
	0.051"				451	551	651					
	0.055"				455	555	655					
	0.061"					561	661					
	0.065"					665						
0.071"						671						

\* depends on the quality of the material



# FILTERS

## OPTIMIZE FINISH QUALITY

Using filters prevents dirt or contaminants from making their way through the spray system. They minimize possible tip clogs and optimise the quality of your finish.

In a standard airless system, the paint passes through 3 filters before atomisation: inlet screen (A), pump filter (B) and the gun filter (C). The first filter is the biggest, the last one, the smallest.

The size of the filter is defined by their number of mesh.

The more mesh, the more the material will be filtered.

It is advised to use a smaller filter with less viscous materials (100 mesh) and a larger filter (60 mesh) with thicker materials such as latex paints.



Graco's exclusive EasyOut™ filtering concept filters the paint from the inside out of the filter, effectively capturing all debris inside the filter mesh.

**RESULT :** very easy to remove, to clean and to reuse.

# HOSES

## OPTIMIZE FLOW AND PRESSURE

BlueMax™ II hoses are the latest in hose technologies. Amongst the lightest in the industry, they are also amongst the most flexible. Last but not least, these hoses will maintain the highest level of performance all the way to the gun. Make sure you ask for BlueMax™ II.

When extending your hose length (over 15 m), it is always recommended to increase your hose diameter. Larger ID reduces friction.

At least for half the distance on standard applications, and the complete distance when the materials are thick. Using this general rule will maintain good performance at the gun.



### EXAMPLE

Paint with Ultra® Max II	30 m	1/4" x 15 m + 1/4" x 15 m + whip end
	45 m	3/8" x 30 m + 1/4" x 15 m + whip end
Texture with Mark V™	22.5 m	3/8" x 15 m + 3/8" x 7.5 m + whip end
Texture with Mark X™	45 m	1/2" x 45 m + whip end

Graco's hoses range from 3/16", 1/4" to 3/8" in diameter and length varies from 4.5 m to 30 m. To optimise working comfort, BlueMax whip ends are available from 0.9 m.

## LOW OVERSPRAY KIT

### OPTIMIZE EFFICIENCY

In order to considerably reduce overspray when spraying, you can reduce the pressure, shorten the distance to the wall, narrow your spray angle, minimize your spray tip orifice and maintain a right angle against the surface.

Difficult to do all of these things together? No problem. To meet the demand for low overspray applications, Graco has created a special spray kit that will virtually eliminate overspray. Particularly essential for exterior but also interior, this kit is optimized to apply paint, which simply needs to be back rolled afterwards. Part number 248947 comes complete with 2 spray tips (LL5321, LL5419).



Check out animation on  
[www.ofsbygraco.eu](http://www.ofsbygraco.eu)

## HOPPER AND BAG ROLLER

### OPTIMIZE PRODUCTIVITY

Feeds the pump using gravity. Benefits when using thick materials such as plasters and fillers. Large capacity enables working for longer periods of time before refilling. Use for overnight storage and to transport your materials. Mounted with extra large pneumatic wheels, goes everywhere on a job site, even stairs. If you are using material packed in plastic bags, use the bag roller.

So the question is not "Why a Hopper?" but "Why aren't you using one?"



## FLUIDS

### TSL™

Specially formulated to extend the life of your pump packings. Always start each job by adding a few droplets in the wet cup. Purpose is not to keep packings lubricated, but to prevent debris and dust from drying on the piston.

### Pump Armor™

Dual purpose:

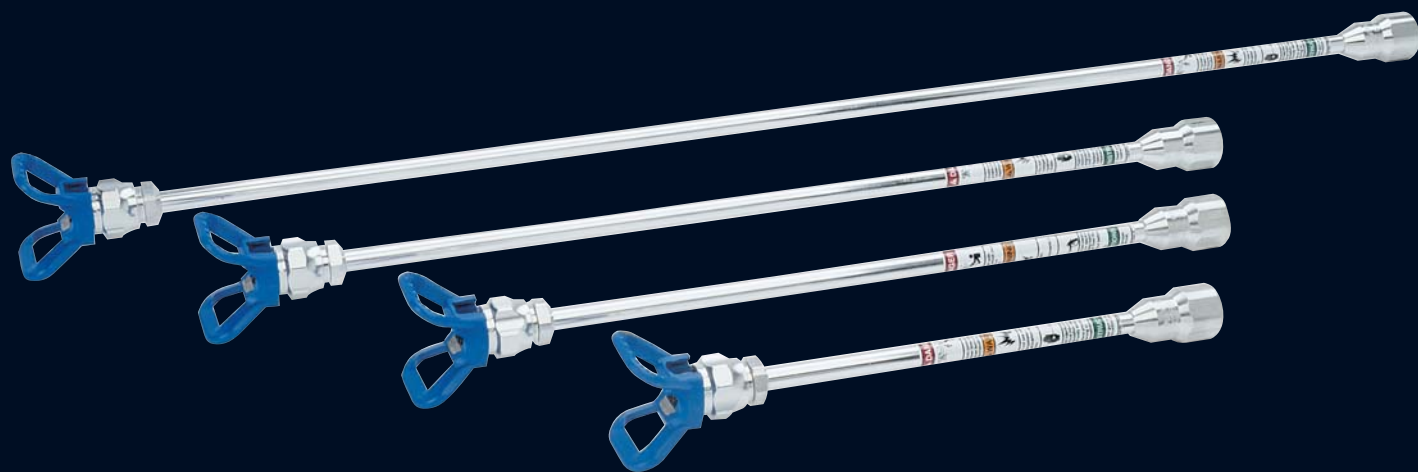
1. Undiluted for long term storage: lubricant and anti-freeze in one
2. Diluted in water (20%) for more efficient daily cleaning



0,25l (206994)  
1l (206995)  
3.8l (206996)

1l (253574)  
3.8l (245133)







## EXTEND YOUR REACH

A full range of accessories has been developed to highly increase the comfort, the speed and the productivity that you need to paint hard-to-reach areas. Forget running up and down ladders or scaffolding. Forget overspray because your spray tip is too far from the surface, wasting paint. Choosing the right tools for the job will make your life easier and your business more profitable.

### TIP EXTENSIONS

#### OPTIMIZE COMFORT

Think of spraying a ceiling. With the right tip extension length, you can complete the job in one go. Extensions come standard with a guard and simply mount at the end of your airless gun. Choose 25, 40, 50 or 75 cm.



### POLES

#### OPTIMIZE VERSATILITY

Definitely one of the most useful need-to-have accessories. Start with just a pole, complete it with the right accessories, our poles prove to be one of the most versatile accessories in our range. Find assembly suggestions in the table on the right.



### POLE GUNS

#### OPTIMIZE SAFETY

Complete and ready to spray, pole guns have the benefit of a lighter pole between the gun and the head. With the addition of the swivel head, you can always adjust it to the right spray angle. The head has a shut-off needle inside that will virtually eliminate spitting. Available in a 90 cm or 180 cm RAC X configuration.



# MODULAR SYSTEM



(optional)

45° angle adapter  
(224399)

## CleanShot™ Fixed Extensions

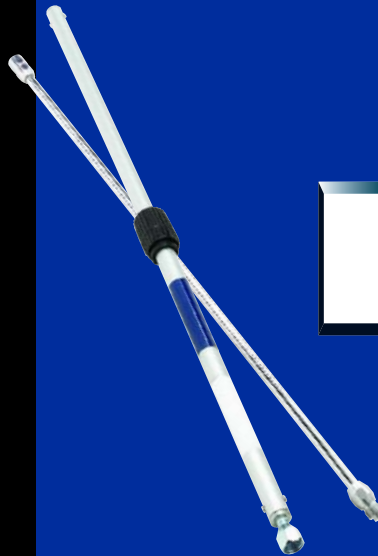
90 cm	244163
180 cm	244164

## Fixed HD Poles

25 cm	232121
50 cm	232122
100 cm	232123
150 cm	232124
200 cm	232125

## Telescoping Roller Extensions

40-90 cm	218775
90-180 cm	218776
180-360 cm	218777



From a pole, you can:

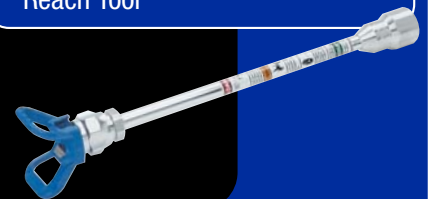
make a basic Pole Gun  
(no CleanShot)



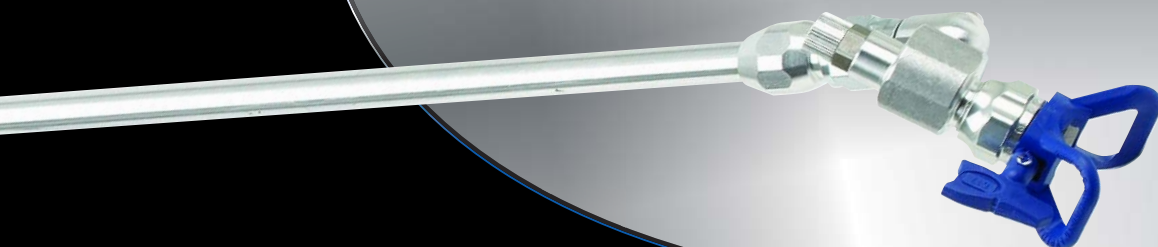
create a CleanShot™  
Pole Gun



create an extra long  
Reach Tool



create a  
Power Roller



# POWER ROLLERS

On smaller jobs, if conditions such as wind prevent spraying and when an airless finish quality is not required, rolling paint is the alternative. Using your sprayer for power rolling offers significant advantages:

## MUCH FASTER

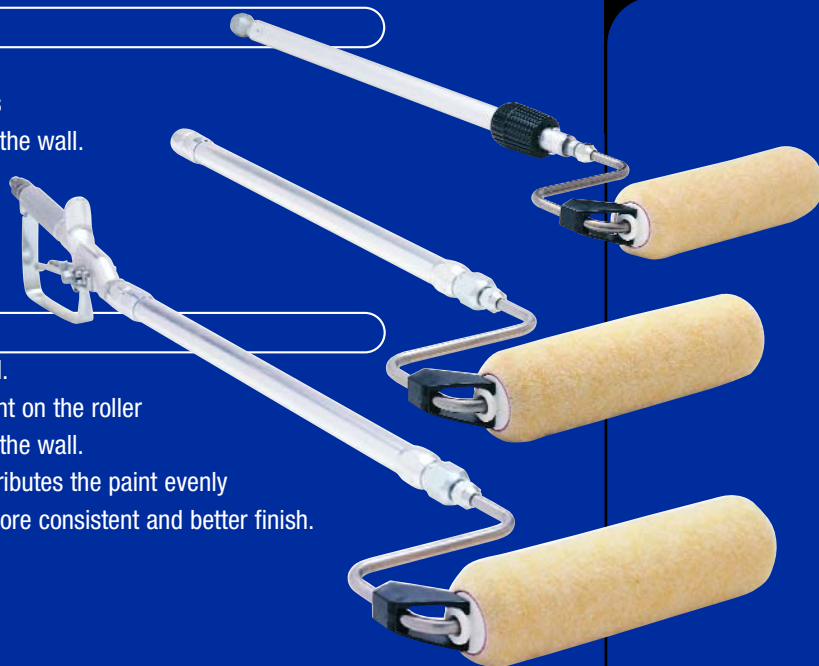
You don't have to stop and bend down to a paint tray every time the roller needs paint, just pull the trigger to bring paint to the roller.

## CONTINUOUS ROLLING

Non-stop rolling, always "wet-on-wet".  
No more dry patches showing afterwards and less efforts spreading the paint onto the wall.

## EVEN PAINT DISTRIBUTION

Control exactly how much paint you need.  
A traditional roller requires spreading paint on the roller by rolling onto a grille before applying to the wall.  
With power rollers, an internal auger distributes the paint evenly onto the nap of the roller resulting in a more consistent and better finish.



The Graco range of power rollers offers a choice of fixed as well as telescopic kits, giving options from 30 cm up to 180 cm. Depending on the surface and the desired finish, you can choose different kind of naps:

### PERFORATED SYNTHETIC COVER

Ideal for flat surfaces such as floors, walls and ceilings.  
Ranges from 10 to 12, 19 and 32 mm thickness with a 23 or 30 cm width.

### PERFORATED REINFORCED COVER

Includes a foam pad between the roller nap and the internal cylinder. Made from fibers, these covers are particularly well suited to work the paint in uneven surfaces such as exterior walls.  
Ranges from 14 to 20 mm thickness at 23 cm width.

## READY-MADE KITS

### Interior

244279	50 cm fixed - with head - no gun
244281	Telescoping (45-90 cm) - no gun
245397	50 cm fixed - with head & gun

### Exterior

6880095	Fixed 30 cm	14 mm nap	In-line Gun
6880096	Fixed 45 cm	14 mm nap	In-line Gun
6880097	Fixed 90 cm	14 mm nap	In-line Gun
098084	Telescoping 90-180 cm	20 mm nap	In-line Gun
098085	Telescoping 45-90 cm	20 mm nap	In-line Gun

# QUICK REFERENCE TABLE

## FIND THE ANSWER TO YOUR QUESTIONS

Can you connect a pole gun to your ST Max™ airless sprayer? Or a pressure roller to an Ultra® Max? What is the maximum recommended hose length for your airless sprayer? Find all the answers and more in the table below.



ST Max™

Ultra® Max II

GMax™

GH™

Mark V™ / X™

### GUNS & GUN/TIP/HOSE KITS

SG3™		■				
FTx™		■	■			
Contractor™		■	■	■	■	■
Silver Plus™		■	■	■	■	■
Silver Flex™				■	■	■
TexSpray™ Blue			■	■	■	■
TexSpray™ Inline				■	■	■
Low Overspray Kit	248947	■	■	■	■	■

### PUMP FILTERS

Short		■				
30 mesh	246425					
60 mesh	246384					
100 mesh	246382					
200 mesh	246383					
Long			■	■	■	■
30 mesh	244071					
60 mesh	244067					
100 mesh	244068					
200 mesh	244069					

### HOSES\*

BlueMax™ II 1/4"	30 m	45 m	45 m	45 m	45 m
BlueMax II 3/8"		60 m	60 - 75 m	60 - 90 m	60 m

\* Maximum hose length and diameter depends on several factors such as viscosity of the product, performance of the sprayer and height to overcome.

### EXTENSIONS

Tip Extensions RAC X™		■	■	■	■	■
25 cm	287019					
40 cm	287020					
50 cm	287021					
75 cm	287022					
Poles		■	■	■	■	■
Pole Guns RAC X		■	■	■	■	■
90 cm	287026					
180 cm	287027					
Pressure Rollers interior		■	■	■	■	■
Pressure Rollers exterior		■	■	■	■	■

### SPECIFICS

Hopper	287987			■	■	■
Bag Roller	289587			■	■	■
Suction Kit	243167			■	■	■

### LIQUIDS

TSL™		■	■	■	■	■
Pump Armor™		■	■	■	■	■



## ABOUT GRACO

Founded in 1926, Graco is a world leader in fluid handling systems and components. Graco products move, measure, control, dispense and apply a wide range of fluids and viscous materials used in vehicle lubrication, commercial and industrial settings.

The company's success is based on its unwavering commitment to technical excellence, world-class manufacturing and unparalleled customer service. Working closely with qualified distributors, Graco offers systems, products and technology that set the quality standard in a wide range of fluid handling solutions. Graco provides equipment for spray finishing, protective coating, paint circulation, lubrication, and dispensing sealants and adhesives, along with power application equipment for the contractor industry. Graco's ongoing investment in fluid management and control will continue to provide innovative solutions to a diverse global market.

## GRACO LOCATIONS

### CONTACT

#### *MAILING ADDRESS*

P.O. Box 1441  
Minneapolis, MN 55440-1441  
Tel: 612.623.6000  
Fax: 612.623.6777

### AMERICAS

#### *MINNESOTA*

Worldwide Headquarters  
Graco Inc.  
88-11th Avenue N.E.  
Minneapolis, MN 55413

### EUROPE

#### *BELGIUM*

European Headquarters  
Graco N.V.  
Industrieterrein-Oude Bunders  
Slakweidestraat 31  
3630 Maasmechelen,  
Belgium  
Tel: 32.89.770.700  
Fax: 32.89.770.777

### ASIA PACIFIC

#### *JAPAN*

Graco K.K.  
1-27-12 Hayabuchi  
Tsuzuki-ku  
Yokohama City, Japan 2240025  
Tel: 81.45.593.7300  
Fax: 81.45.593.7301

### ASIA PACIFIC

#### *CHINA*

Graco Hong Kong Ltd.  
Representative Office  
Room 118 1st Floor  
No.2 Xin Yuan Building  
No.509 Cao Bao Road  
Shanghai, P.R. China 200233  
Tel: 86.21.649.50088  
Fax: 86.21.649.50077

### ASIA PACIFIC

#### *KOREA*

Graco Korea Inc.  
Choheung Bank Building  
4th Floor #1599  
Gwanyang-Dong, Dongan-Ku,  
Anyang-Si, Gyunggi-Do,  
Korea 431-060  
Tel: 82(Korea).31.476.9400  
Fax: 82(Korea).31.476.9801

All written and visual data contained in this document are based on the latest product information available at the time of publication. Graco reserves the right to make changes at any time without notice.

Graco is certified ISO 9001.

Europe  
+32 89 770 700  
FAX +32 89 770 777  
WWW.GRACO.BE